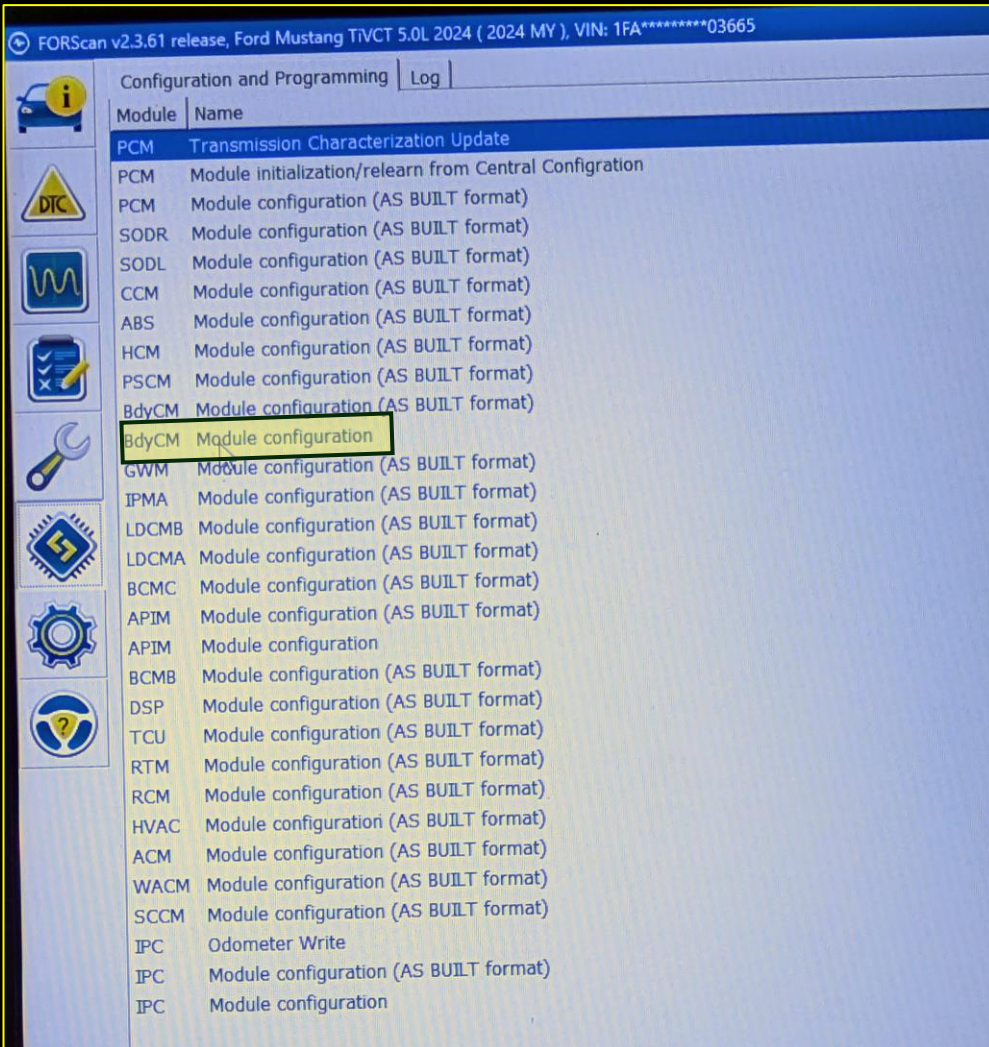


MY24 DH Recognized

- Forscan ver 2.3.61
- Didn't have to enter strategy code
 - With all previous versions, I tried using the strat code buried in my As Built data file (procured here: <https://www.motorcraftservice.com/AsBuilt>) but couldn't get in—ended using a F150 PCM # just so I could look around

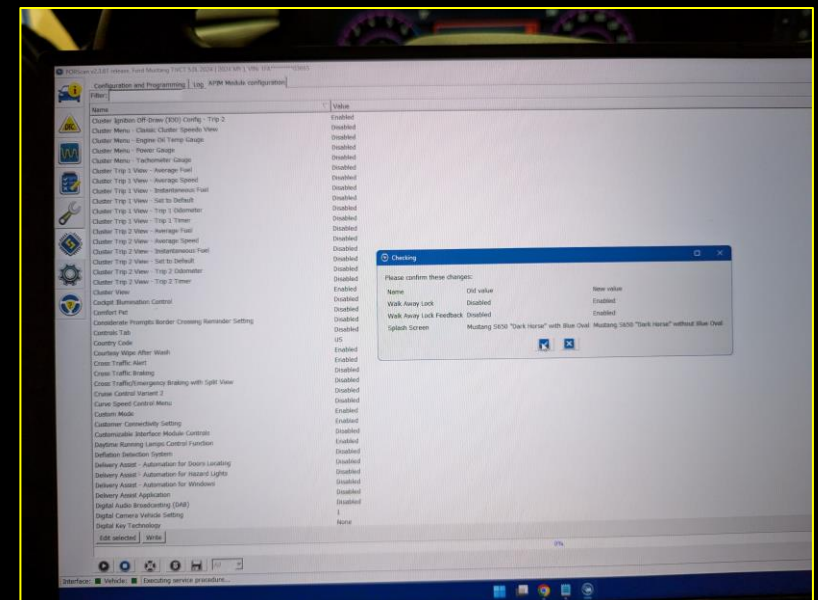
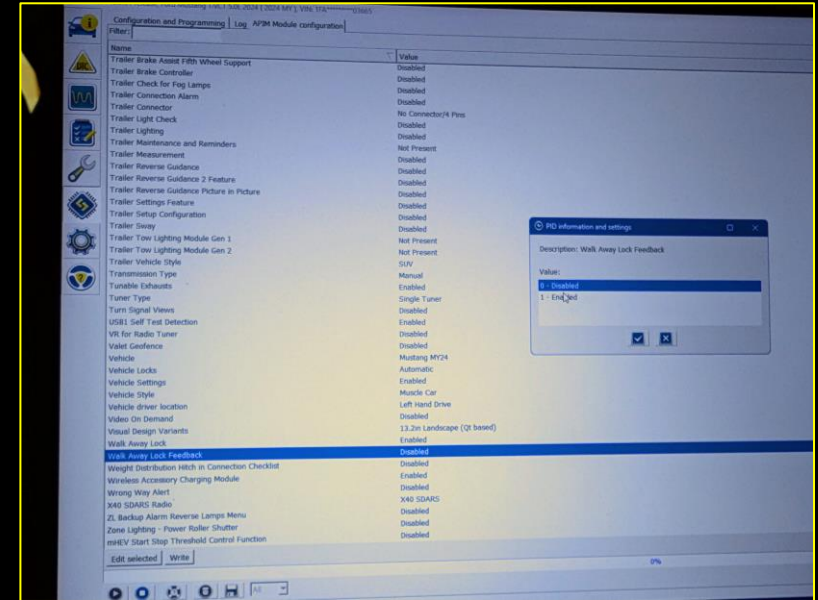


Modules

- Peeked in the “BdyCM” Module vice AsB Data
-

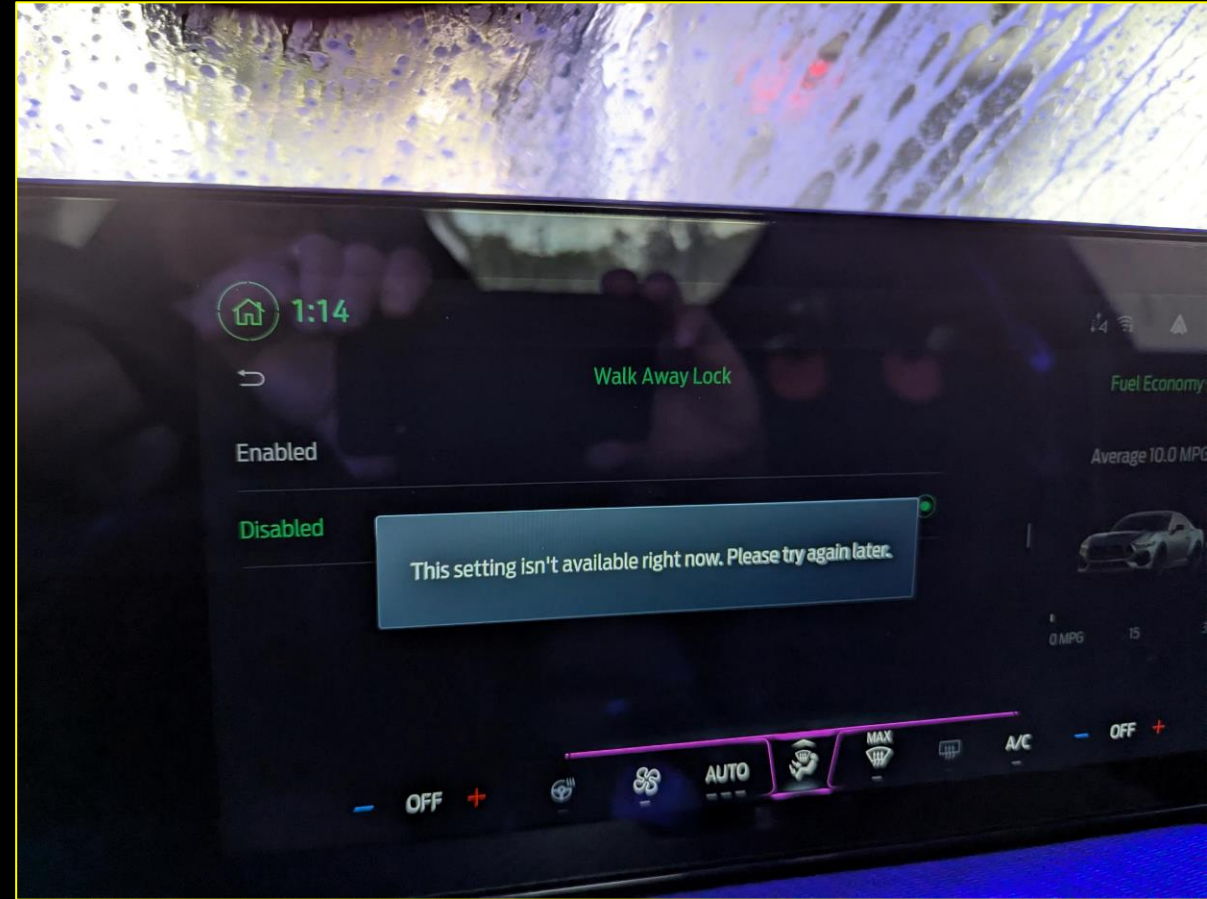
Walk Away Lock & Feedback

- “Easy mode” editing
- Disabled by default
- I enabled both
- But...next slide...



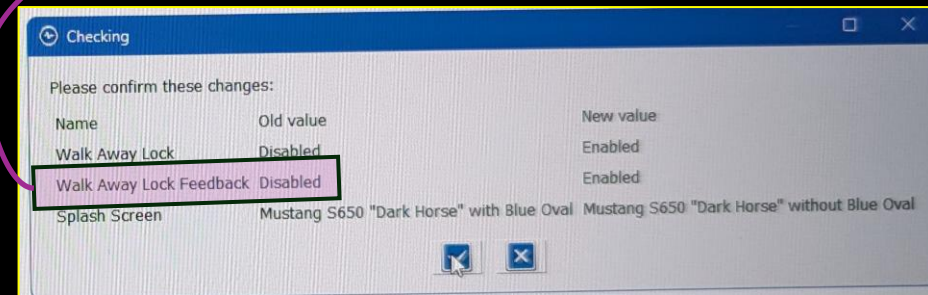
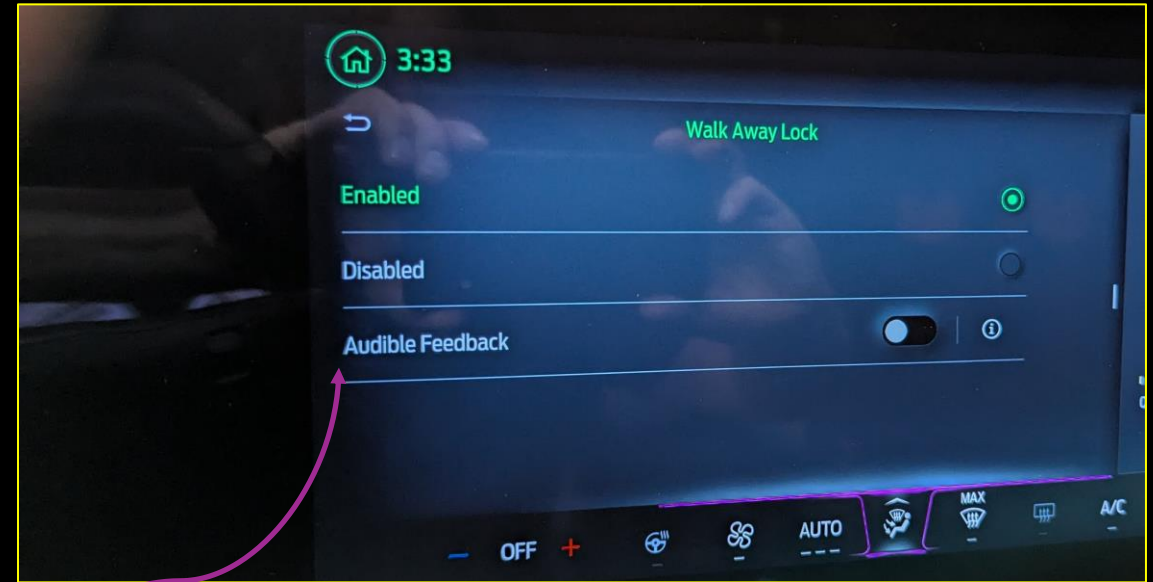
WAL (no audible feedback)

- Disabled (according to the display)
 - Good news (!?!?)...I get to “try again later.” Or...
 - >>> I’ll go into AsB Data to change the all the values for the instances of addresses 726-91-01 and 726-97-02 (there’s a few)
-



“Audible” Walk Away Lock “Feedback”

- Changed Values at addresses 726-91-01 and 726-97-02
- Left “easy mode” edits in place
- WALF setting in “easy mode” just presents the option in the APIM— but does not enable it. **Sliding the button to enable it breaks AWALF**
- **Bottom line: WAL works (locks at about 7 to 10 ft) but without audible feedback**



In addition...

According to Ford...

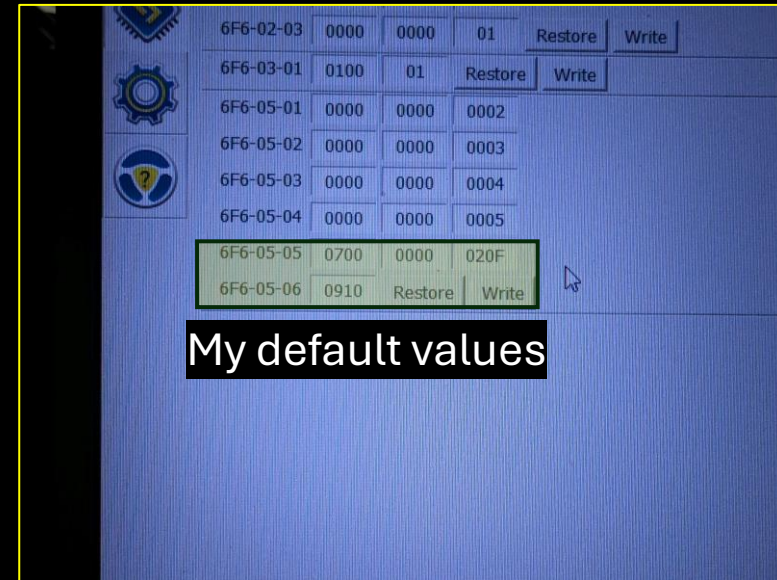
- According to Ford, Approach detection is working as designed...
- Within “approximately 10ft of the vehicle, **you can use the key fob unlock button** and animated lighting...will greet you”
- Caveat: in manual Mustangs, parking brake has to be on for AD to work
- Conclusion...my bad, I assumed “detection” meant the car would recognize or “detect” my fob with ~7 to 10 ft



<https://www.ford.com/support/vehicle/mustang/2024/how-to-videos/video-library/more-vehicle-topics/6319356437112/>

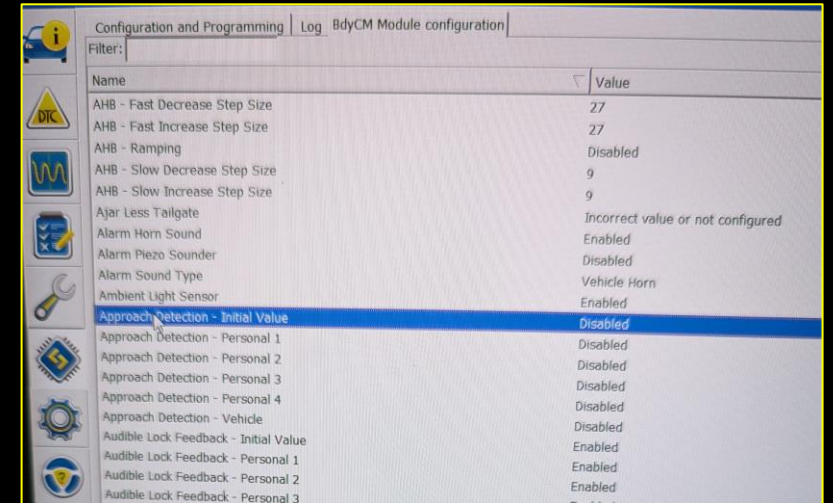
Approach Detection

- First attempt informed by YT tutorial: <https://www.youtube.com/watch?v=39mpqrbkICc>
 - AD didn't work...but, I get the lighting effect when I press the unlock button on fob—which is apparently how Ford designed this feature to work



Approach Detection 2nd Attempt (to get it in the display)

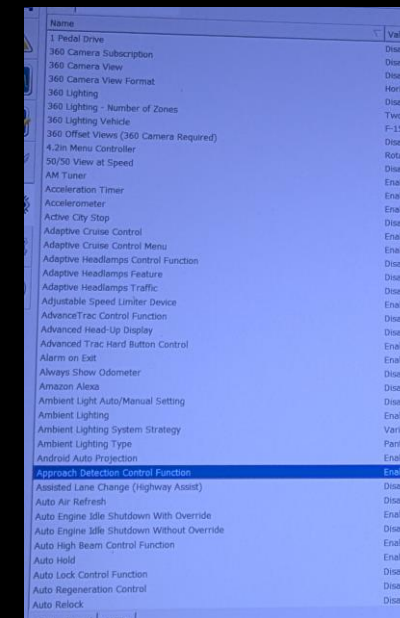
- I enabled all entries for AD in BdyCM “easy mode”
- Enabled “Approach Detection Control Function” in APIM “easy mode”
- Next slide...



Configuration and Programming | Log | BdyCM Module configuration

Filter:

Name	Value
AHB - Fast Decrease Step Size	27
AHB - Fast Increase Step Size	27
AHB - Ramping	Disabled
AHB - Slow Decrease Step Size	9
AHB - Slow Increase Step Size	9
Ajar Less Tailgate	Incorrect value or not configured
Alarm Horn Sound	Enabled
Alarm Piezo Sounder	Disabled
Alarm Sound Type	Vehicle Horn
Ambient Light Sensor	Enabled
Approach Detection - Initial Value	Disabled
Approach Detection - Personal 1	Disabled
Approach Detection - Personal 2	Disabled
Approach Detection - Personal 3	Disabled
Approach Detection - Personal 4	Disabled
Approach Detection - Vehicle	Disabled
Audible Lock Feedback - Initial Value	Enabled
Audible Lock Feedback - Personal 1	Enabled
Audible Lock Feedback - Personal 2	Enabled
Audible Lock Feedback - Personal 3	Enabled



Name	Value
1 Pedal Drive	Disabled
360 Camera Subscription	Disabled
360 Camera View	Disabled
360 Camera View Format	Disabled
360 Lighting	Horizontal
360 Lighting - Number of Zones	Disabled
360 Lighting Vehicle	Two
360 Offset Views (360 Camera Required)	F-150
4.2in Menu Controller	Disabled
50/50 View at Speed	Rotary
AM Tuner	Disabled
Acceleration Timer	Enabled
Accelerometer	Enabled
Active City Stop	Disabled
Adaptive Cruise Control	Enabled
Adaptive Cruise Control Menu	Enabled
Adaptive Headlamps Control Function	Enabled
Adaptive Headlamps Feature	Disabled
Adaptive Headlamps Traffic	Disabled
Adjustable Speed Limiter Device	Enabled
AdvantageTrac Control Function	Disabled
Advanced Head-Up Display	Disabled
Advanced Trac Head Button Control	Enabled
Alarm on Exit	Enabled
Always Show Odometer	Disabled
Amazon Alexa	Disabled
Ambient Light Auto/Manual Setting	Disabled
Ambient Lighting	Enabled
Ambient Lighting System Strategy	Variant
Ambient Lighting Type	Pantone
Android Auto Projection	Enabled
Approach Detection Control Function	Enabled
Assisted Lane Change (Highway Assist)	Disabled
Auto Air Refresh	Disabled
Auto Engine Idle Shutdown With Override	Enabled
Auto Engine Idle Shutdown Without Override	Disabled
Auto High Beam Control Function	Enabled
Auto Hold	Enabled
Auto Lock Control Function	Disabled
Auto Regeneration Control	Disabled
Auto Relock	Disabled

Approach Detection 2nd Attempt

- Display indicates AD is available and enabled but doesn't work the way I assumed
 - I thought I was missing and/or misconfiguring a setting somewhere...but it “appears” (no pun intended) to be working
 - ALSO...after the latest OTA update, I can no longer edit the addresses in [Wynne Sikorski's](#) video tutorial. As soon as I write, the values revert to their default—weird.
-

